



Cable lockout CB03



DESCRIPTION:

Part No.: CB03
Cable Lockout

- a) Made from industrial durable nylon, Cable with insulation coated stainless steel rope in red. .
- b) Designed to effectively lock out a variety of isolation points, including gate valves, "T" valve handles, electrical disconnects, and much more.
- c) The handle is designed to operate the device without any tool.
- d) Cable length and color can be customized.

Specification:

PART NO.	Description
CB03	Equip with 3.8mm dia cable, length 2.0Mtr

ORIGIN: CHINA



Cable lockout CB05



DESCRIPTION:

Part No.: CB05
Cable Lockout

- a) Made from nylon, with an insulation plastic coated steel cable.
- b) With 6 holes (8MM) for padlocks or hasps.
- c) Cable length and color can be customized.

Material: Nylon+S304 PVC coated cable

Dimension: Dia. 4mm x Length 2.0Mtr

Weight: 110g

Specification:

PART NO.	Description
CB05	Equip with 4mm dia cable, length 2.0Mtr

ORIGIN: CHINA



Cable lockout CB01-4, CB01-6



DESCRIPTION:

Part No.: CB01-4, CB01-6
Adjustable cable lockout

- a) Made of industrial resin ABS, with a insulation coated stainless steel cable (PVC free).
- b) Accepts up to 4 padlocks for multiple lockout application.
- c) Includes high-visibility, re-usable, write-on safety labelsd
- e) Cable length can be customized.

Specification:

PART NO.	Description
CB01-4	Equip with dia 4mm cable, length 2.0Mtr
CB01-6	Equip with dia 6mm cable, length 2.0Mtr

ORIGIN: CHINA



Cable lockout CB01-4, CB01-6



DESCRIPTION:

Part No.: CB01-4, CB01-6
Adjustable cable lockout

- a) Made of industrial resin ABS, with a insulation coated stainless steel cable (PVC free).
- b) Accepts up to 4 padlocks for multiple lockout application.
- c) Includes high-visibility, re-usable, write-on safety labelsd
- e) Cable length can be customized.

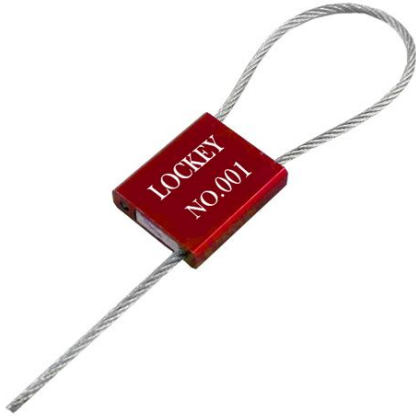
Specification:

PART NO.	Description
CB01-4	Equip with dia 4mm cable, length 2.0Mtr
CB01-6	Equip with dia 6mm cable, length 2.0Mtr

ORIGIN: CHINA



Aluminum Alloy Body Car Seal Lockout CS01-2.5S-256, CS01-2.5S-1000



DESCRIPTION:

Part No.: CS01-2.5S-256, CS01-2.5S-1000

Aluminum Alloy Body Galvanized Cable Car Seal Lockout

- a) Ideal for long term uses, each car seal is self-locking. The only way to remove it is by cutting after the cable passed through the body.
- b) All car seals are laser print with individually numbering.
- c) The length of the cable can be customized.
- d) Colors Available, normally in red yellow, green and blue.

Specification:

Part No.	Material	Description
CS01-2.5S-1000	Aluminum alloy body, with galvanized cable	Cable diameter 2.5mm, length 1000mm
CS01-2.5S-256	Aluminum alloy body, with galvanized cable	Cable diameter 2.5mm, length 256mm

ORIGIN: CHINA